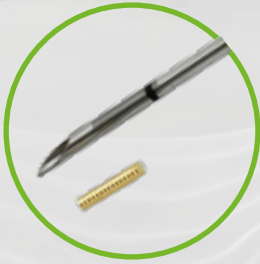


TUMOR MARKING NEEDLE

TÜMÖR İŞARETLEME İĞNESİ

- ↳ Sterile placement needle with preloaded 99.99% Pure Gold or PEEK® marker
- ↳ Accurate target visualization in tumors/organs during external radiation therapy
- ↳ Excellent visibility of markers under fluoroscopy, X-ray, CT, MRI and ultrasound
- ↳ The ergonomic Handle #1 design with safety lock provides secure positioning of markers
- ↳ Knurled surface of the markers prevent migration



- ↳ Distal ucuna altın ve PEEK® işaretleyicisi yüklenmiş olan steril iğne
- ↳ Radyasyon tedavilerinde tümör veya organlarda kesin hedefi görüntüleme
- ↳ Floroskopi, X-ray, CT, MRI ve ultrason altında mükemmel marker görünümü
- ↳ Emniyet kilitli ergonomik sap tasarımı sayesinde en iyi şekilde marker konumlandırılması sağlanır

PEEK MARKER

GOLD MARKER

Ref. No		Needle (G x cm)	PEEK® Marker (mm x mm)	Marker Shape	Ref. No		Size (G x cm)	Marker Size (mm x mm)	Marker Shape
Handle #1	Handle #2				Handle #1	Handle #2			
GTP1410 #1	GTP1410 #2	14 x 10	1,5 x 5	∞	GTM1810 #1	GTM1815 #2	18 x 10	1 x 4	⌋⌋⌋⌋⌋⌋
GTP1412 #1	GTP1412 #2	14 x 12	1,5 x 5	∞	GTM1815 #1	GTM1815 #2	18 x 15	1 x 4	⌋⌋⌋⌋⌋⌋
GTP1415 #1	GTP1415 #2	14 x 15	1,5 x 5	∞	GTM1820 #1	GTM1820 #2	18 x 20	1 x 4	⌋⌋⌋⌋⌋⌋
GTP1610 #1	GTP1610 #2	16 x 10	1,2 x 5	∞	GTM1825 #1	GTM1825 #2	18 x 25	1 x 4	⌋⌋⌋⌋⌋⌋
GTP1615 #1	GTP1615 #2	16 x 15	1,2 x 5	∞	GTM1915 #1	GTM1915 #2	19 x 15	0,8 x 4	⌋⌋⌋⌋⌋⌋
GTP1810 #1	GTP1810 #2	18 x 10	1 x 5	⌋⌋⌋⌋⌋⌋	GTM1920 #1	GTM1920 #2	19 x 20	0,8 x 4	⌋⌋⌋⌋⌋⌋
GTP1815 #1	GTP1815 #2	18 x 15	1 x 5	⌋⌋⌋⌋⌋⌋	GTM1925 #1	GTM1925 #2	19 x 25	0,8 x 4	⌋⌋⌋⌋⌋⌋
GTP1820 #1	GTP1820 #2	18 x 20	1 x 5	⌋⌋⌋⌋⌋⌋					
GTP1825 #1	GTP1825 #2	18 x 25	1 x 5	⌋⌋⌋⌋⌋⌋					
GTP1910 #1	GTP1910 #2	19 x 10	1 x 5	⌋⌋⌋⌋⌋⌋					
GTP1915 #1	GTP1915 #2	19 x 15	0,8 x 5	⌋⌋⌋⌋⌋⌋					
GTP1920 #1	GTP1920 #2	19 x 20	0,8 x 5	⌋⌋⌋⌋⌋⌋					
GTP1925 #1	GTP1925 #2	19 x 25	0,8 x 5	⌋⌋⌋⌋⌋⌋					

* Please indicate the type of handle (Handle #1 or Handle #2) when ordering.

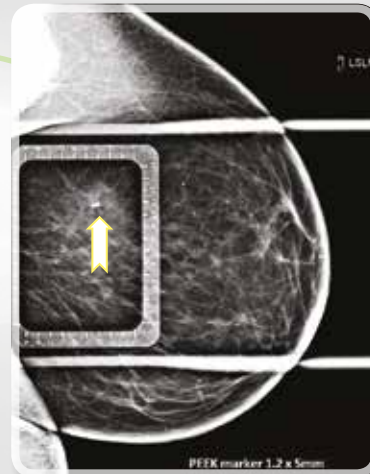


Fig-1 Mammography capture of PEEK marker 1.2mmx5mm